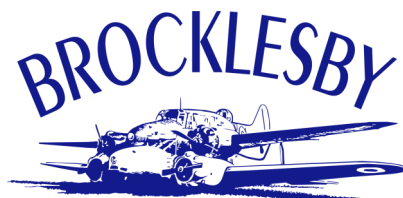


Brocklesby Public School

Gently in manner. Strongly in matter.

NEWSLETTER

Term 3 Week 8 2022



PUBLIC SCHOOL

Upcoming Events

TERM 3 2022

WEEK 9

Monday 12th September

Mobile Library

Tuesday 13th

Wednesday 14th

Warm up Wednesday

School Library

Thursday 15th September

Big Talk parents & students

Friday 16th September

Sport Basketball

Cooking with Phuong

Tree Planting Activity Day

WEEK 10

Monday 19th

Stage 2 Borambola Excursion

Tuesday 20th

Wednesday 21st

School Library

Warm Up Wednesday

Thursday 22nd

Big Talk parents & students

Whole School Assembly

Friday 23rd

Sport Basketball

Last Day of Term 3

Principal's Message

Spring has sprung, the grass has riz! It has certainly been a warm welcome to spring with the sunny days, canola crops blooming and a renewed energy in the school. This was particularly evident at the P&C Movie Night Fundraiser. The collaborative way parents, family and wider community came together for a fun evening was heartwarming to say the least. Events like this are what makes our school and community so great! Thank you to the P&C for your incredible efforts and organisation.

Congratulations to Lilly Shipard for her efforts at the Riverina Athletics Carnival, competing in three events. It is a wonderful achievement to make it to Riverina and compete at such a competitive level.

Yesterday the students attended the Police Activity Day at Rand Public School. Congratulations to Mac Schilg and Lucy Severin for receiving Citizenship Awards on the day.

Next week, we look forward to cooking with Phuong and tree planting with the Petaurus Group. We will then finish off the term with the Stage 2 Borambola Excursion and our whole school assembly.

We look forward to welcoming you into our school at our next event.

Miss Widdison

Principal



Students enjoying the Police Activity Day at Rand Public School.



Education

Brocklesby Public School
65 Main Street,
Brocklesby NSW 2642
T 02 6029 4272
F 02 6029 4239

W www.brocklesby-p.schools.nsw.edu.au
E brocklesby-p.school@det.nsw.edu.au

Principal: Erin Widdison

SCHOOL NEWS

Cooking with Phuong

On Friday 16th September Phuong will be kindly returning to the kitchen for some cooking with the students.

Tree Planting Activity Day

Brocklesby PS have been invited to participate in the Building biodiversity relationships within the Burrumbuttock and surrounds farming community project, delivered by Petaurus Education Group Inc. (PEG), assisted by the NSW Government through its Environmental Trust. This project includes various activities throughout 2022 such as visits to the school by PEG staff, excursions to landholders' properties in your local area and visits to Wirraminna Environmental Education Centre in Burrumbuttock. On Friday 16th September we will be travelling to Sam Schilg's property to plant some trees and participate in some biodiversity activities.

Kindergarten 2023

Enrolments can be done online here or by clicking on the 'Enrolments' tab found on the Brocklesby Public School website (at the top of the home page). Enrolment forms are also available to pick up from the office.

To complete your application we require your child's birth certificate, immunisation records and proof of residence documents totaling 100 points.

If you still have documentation to submit to the office please do so as soon as possible.

To find out the types of documents required for proof of residence and their points value click on the following link: 100 point check of proof of residence

Parent Information Session: Wednesday 14th September @ 6.30pm

Transition Days

Session 1 – Tuesday 18th October – 9.30am-11:15am

Session 2 – Tuesday 25th October – 9.30am-11:15am

Session 3 – Tuesday 1st November – 9.15am-12:30pm

Session 4 – Tuesday 8th November – 9.15am – 3.15pm

Year 6 Check-In Assessment

Check-in assessments are online assessment for students in Years 3 to 9. They are mapped to the NSW Syllabuses and National Literacy and Numeracy Learning Progressions. There are two assessments: reading and numeracy. Each assessment is designed to be quick and easy to administer, consisting of between 40 to 50 multiple choice questions.

Schools can access feedback soon after the completion of the assessment. Student assessment feedback from the Check-in assessments, including links to teaching strategies will be available in Scout. Student assessment information is also mapped against the National Literacy and Numeracy Learning Progressions and can be accessed in PLAN2.

The assessment can supplement existing school practices to identify how students are performing in literacy and numeracy and to help teachers tailor their teaching more specifically to student needs.

Assessment Window: Year 6 students - Weeks 8 to 10 (5 - 23 September)

Changes to Year 6 assessments and Best Start Year 7 The following changes to the Year 6 assessment support Secondary school transition.

- In addition to the reading and numeracy assessment, Year 6 will complete a writing task. The writing task will be externally marked
- Secondary schools will be able to access the 2022 Year 6 Check-in assessment data (Term 3) from the first day of Term 1 via new transition reports in Scout. Details on the new reports will be available in Term 4, 2022.

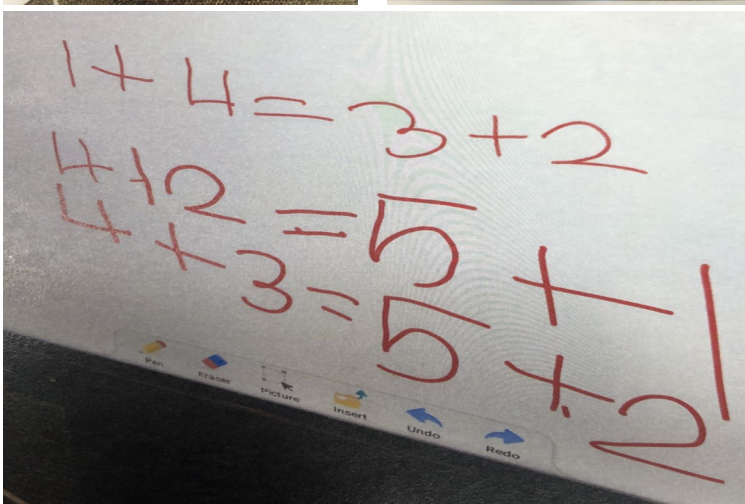
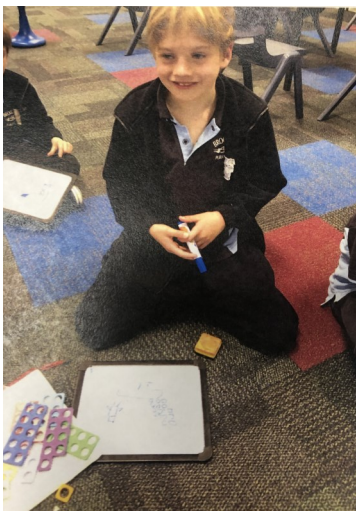
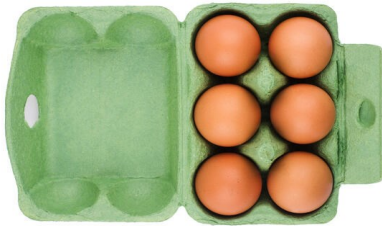
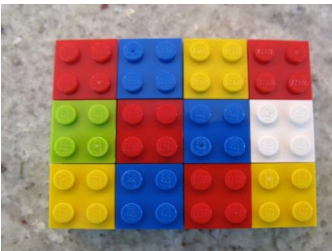
Best Start Year 7 is retired from 2023 and replaced with the Transition to Year 7 assessment. The Transition to Year 7 assessment will use the same items as the Term 3, 2022 Year 6 Check-in assessment (reading and numeracy) to allow schools to have comparable data for the cohort. The Transition to Year 7 assessment does not include the writing assessment. If you have any further questions please contact us.



CLASS NEWS

K-2 Class

K-2 have been learning about balancing equations during mathematics lessons. They have also been learning about area. This includes arrays and their relationship to other areas of mathematics. The students have been finding arrays in our everyday environments. What arrays can you spot at home?



Inquiry Learning

The Infants have been learning about push and pull. They explored push and pull using a variety of toys and brainstormed vocabulary associated with pushes and pulls.



In groups the students also had to design an insulated lunch box using their chosen insulation. The groups will be testing their insulated lunch boxes next week.



COVID-19

COVID19 Information (updated 24th August)

With COVID-19 and the flu circulating in the community, we will continue our layered COVID-smart measures for Term 3 to prioritise student and staff wellbeing, while keeping schools operational. Our layered measures include strongly advising mask-wearing, rapid antigen testing (RAT), strongly encouraging vaccinations, maximising natural ventilation, hygiene and cleaning. In certain circumstances, the department's Health, Safety and Staff Wellbeing case management team may advise that some additional COVID-smart measures must be temporarily reintroduced or enhanced at your school to act as a 'circuit breaker'. Your principal will work with your Director, Educational Leadership (DEL) and the department's Health, Safety and Staff Wellbeing case management team and let you know of any changes at your school, if needed.

Masks

In response to NSW Health advice and the current COVID-19 situation in the state, the Minister for Education and Early Learning has strongly encouraged mask-wearing when indoors for all school-based staff and for all students, particularly for the first 4 weeks of Term 3. Masks are an effective way to reduce the risk of transmission of respiratory viruses and infectious diseases, including COVID-19 and the flu. A 4-week mask-wearing 'blitz' will help to reduce the risk of transmission events in our schools and keep our schools operational to support our students' learning. Masks continue to be required for workers who support our students who are at greater risk of serious illness should they contract COVID-19 in schools for specific purpose (SSPs), support units and some mainstream classrooms. Masks continue to be mandatory on public transport. This applies to students aged 12 years and older, and staff when travelling to and from school and during school excursions by public transport or by chartered transport services. In line with the latest advice from NSW Health, masks are recommended for students and staff who have recovered from COVID-19, completed their 7-day isolation period and are no longer showing symptoms for an additional 3 days (from days 8 – 10 after receiving a positive COVID-19 result). Schools are asked to refer parent and carer enquiries to the NSW Government fact sheets for information on safely managing COVID-19. Note: In certain circumstances, and as advised by the department's Health, Safety and Staff Wellbeing team, some schools may be directed to temporarily reintroduce additional COVID-19 temporary measures including mandatory mask-wearing to minimise transmission risks within the school settings. Principals will communicate this update to schools if and when applicable. RATs will be sent to schools from Week 1 of Term 3. The delivery is expected to be completed within the first three weeks of term. Beyond the departmental provision of RATs, students and staff should continue to access PCR tests and store-purchased RATs when experiencing symptoms or when identified as a close contact. Please continue to upload any positive test results to the Services NSW website.

Close contacts

Staff and students who are identified as close contacts are allowed to attend school, providing they follow certain guidelines.

Staff and students cannot attend schools for specific purposes (SSPs) or support units as a close contact, and will be supported to work or learn from home. Close contacts attending school will need to adhere to the following in addition to the NSW Health guidelines:

- They must notify the school and/or early childhood education (ECE) service provider (including their outside of school hours care provider) if they are intending to return under this provision.
- They should conduct a daily RAT and return a negative result each morning before attending school for 5 school days.
- They (if in a secondary school setting) must wear a mask indoors except when eating or exercising. Primary school students are recommended to wear a mask indoors (except when eating or exercising).

- No student or staff member identified as a close contact will be permitted to participate in overnight excursions, including school camps.
- No apprentices, trainees or students on placement or staff member identified as a close contact will be permitted to attend settings identified as high risk by NSW Health (healthcare, aged care, disability care or correctional facilities)
- Any visitor to a school site who is a close contact is required to advise the school that they are a close contact before they come on site. These visitors should conduct a daily RAT and return a negative result before attending. They must also wear a mask indoors at all times. Schools should consider if the visit can be conducted virtually.

Remember

Staff and students cannot attend school if they are showing any symptoms of COVID-19. If symptoms occur at any time, your child should not attend school and should undertake a rapid antigen test (RAT). If a student is unwell and has any COVID-19 symptoms, they should always test for COVID-19. If the test comes back negative for COVID-19, the student should still not return to school until either:

The student no longer has any symptoms, or A medical certificate is provided to the school confirming that symptoms are explained by another diagnosis (such as hay fever). It is important that students do not attend school if they are unwell, even if they have tested negative for COVID-19. Rapid antigen tests can produce false negative results and symptoms of other illnesses can also be similar to COVID-19, including flu, the common cold and stomach bugs. Health advice is that students who are sick should always stay home to rest and recover and avoid putting other students and staff at risk of getting sick. It is recommended that students and staff that return to school after recovering from COVID-19 do not participate in rapid antigen testing for 12 weeks following release from self-isolation unless they develop new COVID-19 symptoms. This is due to NSW Health advice that people who have recovered from COVID-19 have a low risk of contracting it again in the following 12 weeks.

For positive COVID-19 cases

If there is a positive case in your child's class, year or other grouping, your child can continue to attend school in line with NSW Health advice. If a student or staff member receives a positive RAT test, they need to:

- record the positive RAT result through the Service NSW website or Service NSW app – please add details of your child's school or early childhood education centre when prompted
- notify the school of the positive RAT or PCR test result as soon as possible
- follow NSW Health advice to isolate for 7 days. Registering your child's positive RAT with Service NSW is a requirement of the Public Health Order and helps NSW Health track COVID-19 in schools and address any public health issues early on if required.
- Negative results do not need to be reported to Service NSW or to the school. Schools will inform their community when there is a positive case in the school and guide families on NSW Health advice, including monitoring for symptoms. Parents should expect regular communication. For more information, including COVID-19 guidelines and fact sheets, refer to People who tested positive or were exposed to COVID-19.

NSW Health also recommend getting vaccinated against flu. Flu has different effects of COVID-19 and often affects children more severely than COVID-19. Flu vaccines are free for all children aged 6 months to 5 years, and for a small charge for those aged 5 years and older.



SCHOOL EVENTS

Term Three	MONDAY	TUESDAY	WEDNESDAY	THURSDAY	FRIDAY	SAT SUN
Week 1	18 Staff Development Day	19 Students return Term 3	20 School Library	21 Big Talk parents & students NAIDOC Day Excursion	22 Football/Netball Sport	23/24
2	25 P&C Meeting 6pm	26	27	28 Big Talk parents & students	29 Football/Netball Sport	30/31
3	1 Mobile Library Education Week	2	3 School Library Warm Up Wednesday School Open Day 1:30pm	4 Big Talk parents & students SR Athletics Carnival	5 Football/Netball Sport	6/7 Aug
4	8	9	10 School Library Warm Up Wednesday	11 Big Talk parents & students	12 Football/Netball Sport	13/14
5	15 Mobile Library P&C Meeting 6pm	16	17 School Library Warm Up Wednesday K-2 Excursion	18 Big Talk parents & students	19 Football/Netball Sport Premier's Reading Challenge Closes	20/21
6	22 Book Week	23	24 School Library Warm Up Wednesday	25 Big Talk parents & students Book Week Parade Book Fair	26 Basketball Sport P&C Movie Night Riverina Athletics Carnival	27/28
7	29 Mobile Library	30	31 School Library Warm Up Wednesday	1 Big Talk parents & students	2 Basketball Sport Father's Day Activity	3 Sept
8	5	6	7 School Library Warm Up Wednesday POP up Playgroup	8 Big Talk parents & students	9 Basketball Sport	10/11
9	12 Mobile Library	13	14 Warm Up Wednesday School Library	15 Big Talk parents & students	16 Basketball Sport Cooking With Phuong 9.30am Tree Planting Activity Day 12.30	17/18
10	19 Stage 2 Borambola Excursion	20 Stage 2 Borambola Excursion	21 Warm Up Wednesday School Library	22 Big Talk parents & students Whole School Assembly @ 2pm	23 Basketball Sport Last Day Term 3 Walbundrie Show Entries Due	24/25

Term 4 students return Monday 10th October

SCHOOL NEWS



CONNECTING KIDS

Kindergarten Transition

For children who will begin Kindergarten at Brocklesby Public School in 2023

Tuesday 18th	October	9.30 – 11.15am
Tuesday 25th	October	9.30 – 11.15am
Tuesday 1st	November	9.15 – 12.30pm
Tuesday 8th	November	9.15 – 3.15pm



Learning

Young children arrive at school with a wealth of experiences and knowledge. Schools acknowledge this and use this prior knowledge as the basis for future learning.



Connecting

Building on children's prior and current experiences helps them to feel secure, confident and connected to familiar people, places, events and understandings.



Transitioning

Transition programs impact a child's engagement with school, their wellbeing and ongoing learning trajectory. A transition to school program is developed in response to the needs of the children and parents within the local context.

Get in touch:

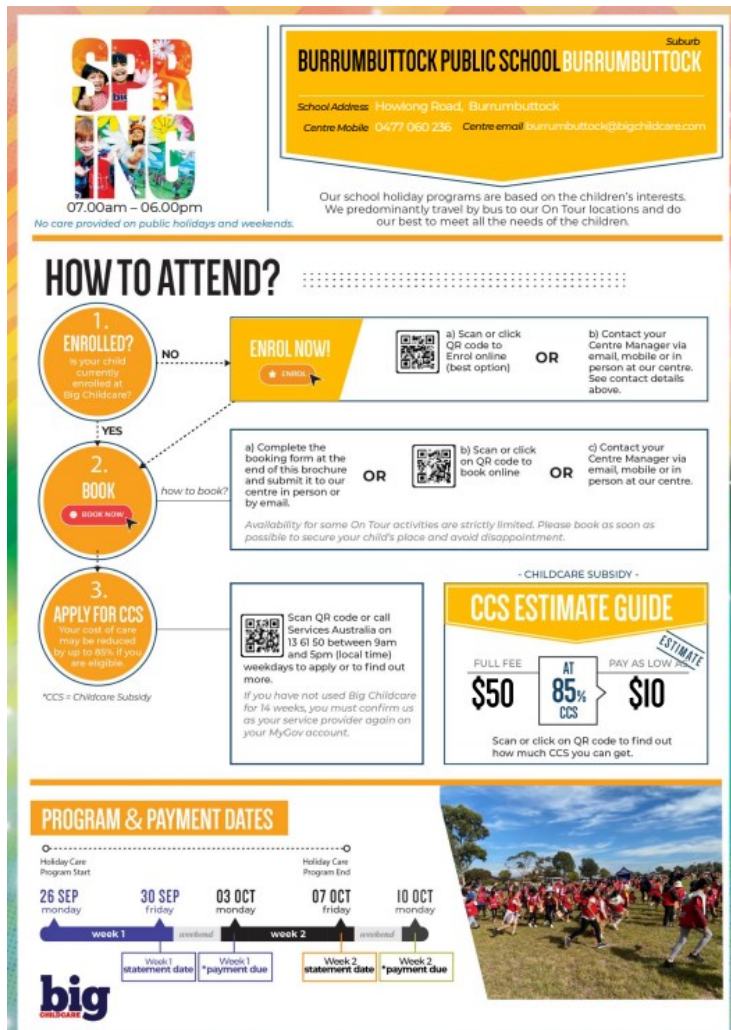
W www.brocklesby-p.schools.nsw.edu.au
E Brocklesby-p.school@det.nsw.edu.au

65 Main Street,
Brocklesby NSW 2642
T 02 6029 4272
F 02 6029 4239

COMMUNITY NEWS

Upcoming Events

Bookings are now open for the Spring Holiday Care program held at Burrumbuttock Public School.



BURRUMBUTTOCK PUBLIC SCHOOL BURRUMBUTTOCK
 School Address: Howlong Road, Burrumbuttock
 Centre Mobile: 0477 060 236 Centre email: burrumbuttock@bigchildcare.com

Our school holiday programs are based on the children's interests. We predominantly travel by bus to our On Tour locations and do our best to meet all the needs of the children.

HOW TO ATTEND?

- 1. ENROLLED?** Is your child currently enrolled at Big Childcare?
 NO → **ENROL NOW!**
 a) Scan or click QR code to Enrol online (best option) OR b) Contact your Centre Manager via email, mobile or in person at our centre. See contact details above.
- 2. BOOK** how to book?
 a) Complete the booking form at the end of this brochure and submit it to our centre in person or by email. OR b) Scan or click on QR code to book online OR c) Contact your Centre Manager via email, mobile or in person at our centre. See contact details above.
- 3. APPLY FOR CCS** Your cost of care may be reduced to as little as \$10. If you are eligible.

CCS ESTIMATE GUIDE
 FULL FEE \$50 AT 85% CCS PAY AS LOW AS \$10
 Scan or click on QR code to find out how much CCS you can get.

PROGRAM & PAYMENT DATES

Week	Statement Date	Payment Due
Week 1	26 SEP	30 SEP
Week 2	03 OCT	07 OCT

big childcare

Tell Them From Me

One of the most important ways that we can improve our services at Brocklesby Public School is to survey parents using the Tell Them From Me survey. This survey, once filled out, is sent to the school anonymously, but provides a wealth of information regarding several aspects of the school. The more completed surveys we receive the more accurate our feedback can be.

Brocklesby Public School
 65 Main Street,
 Brocklesby NSW 2642
 T 02 6029 4272
 F 02 6029 4239



Education

P&C NEWS

P&C Meeting

Next P & C Meeting
 To Be Advised
All Welcome - at the school

Attached to this Newsletter:

Permission Notes:

- Tree Planting Activity Day
- Other:**
 - Big Childcare Spring Holiday Program
 - Walbundrie Show Information

Happy Birthday Gracie!



W www.brocklesby-p.schools.nsw.edu.au
E brocklesby-p.school@det.nsw.edu.au

Principal: Erin Widdison